

AVAILABLE FOR LEASE

# Weiss Building

18,484SF-127,240SF AVAILABLE

19405 68th Dr NE, Arlington, WA, 98223



## SPACE HIGHLIGHTS

Flexible floor plans that can be demised to fit your needs and varying in size 18,484SF- 96,526SF

11,819SF of new office (Can be demised)

Heavy Power

Dock high and on grade loading

22"-24" clear heights

Aggressive below market rates.

\$0.90 PSF Warehouse \$1.50 PSF office

Local experienced landlord that can quickly delivery on any requirement.

2.3 acres adjacent available

3,000 AMPS of 277/480V Power



**JON BOCKMAN**

425-417-5391

jbockman@rainiercp.com

The information supplied herein is from sources we deem reliable. It is provided without any representation, warranty or guarantee, expressed or implied, as to its accuracy. Prospective buyer or tenant should conduct an independent investigation and verification of all matters deemed to be material, including, but not limited to, statements of income and expenses.

AVAILABLE FOR LEASE

# Weiss Building

18,484SF-127,240SF AVAILABLE

19405 68th Dr NE, Arlington, WA, 98223



**RAINIER**

COMMERCIAL  
PARTNERS



**JON BOCKMAN**

📞 425-417-5391

✉ [jbockman@rainiercp.com](mailto:jbockman@rainiercp.com)

The information supplied herein is from sources we deem reliable. It is provided without any representation, warranty or guarantee, expressed or implied, as to its accuracy. Prospective buyer or tenant should conduct an independent investigation and verification of all matters deemed to be material, including, but not limited to, statements of income and expenses.

AVAILABLE FOR LEASE

# Weiss Building

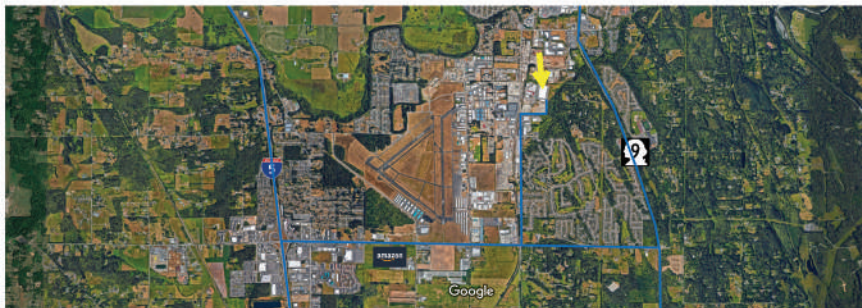
18,484SF-127,240SF AVAILABLE

19405 68th Dr NE, Arlington, WA, 98223



**RAINIER**

COMMERCIAL  
PARTNERS



## Drive Times

Seattle 45 MIN | Everett 25 MIN | Canada 1 hour 15 minutes



**JON BOCKMAN**

📞 425-417-5391

✉️ [jbockman@rainiercp.com](mailto:jbockman@rainiercp.com)

The information supplied herein is from sources we deem reliable. It is provided without any representation, warranty or guarantee, expressed or implied, as to its accuracy. Prospective buyer or tenant should conduct an independent investigation and verification of all matters deemed to be material, including, but not limited to, statements of income and expenses.